

A woman with long dark hair and glasses is shown in profile, looking down at a dense array of white network cables. She is wearing a patterned sweater. The background is a server room with blue lighting and more cables hanging from above. The overall tone is professional and technological.

**RI.
SE**

New solutions for a sustainable future

An introduction to Sweden's research institute



“The Government’s research bill for the next three years focuses on major investments aimed at societal challenges in areas such as climate change and digitalisation. Those of us involved in industry-related applied research have an important role to play in this.”

– Pia Sandvik, CEO of RISE

Increased competitiveness through sustainable transition

We have a clear roadmap. For Sweden's private and public sectors to be at the forefront, sustainability is key and requires the combined perspectives and services of Sweden's independent research institute.

At RISE, we currently work with all the industries and sectors that build a strong and sustainable Sweden. We have a long tradition of working with Swedish industry, but we are working increasingly with the public sector and small and medium-sized enterprises. The latter currently account for more than a third of our assignments from the business community.

Sustainability is in our DNA and is present in everything we do. Whether it's helping companies with research-based knowledge that contributes to development and competitiveness, developing innovations, providing the relevant knowledge, or contributing to public sector renewal.

With our breadth and collective expertise, we can also employ a systems perspective on sustainability issues. For instance, we can help demonstrate how different initiatives affect each other, and provide a more accurate overview of the results.

Meeting societal challenges

As an independent research institute with core state funding, we can assume a unique and proactive role. When we see a need for transition, we do not wait for an order to be requested.

Instead, we bring together the necessary operators and get on with the work. Within the framework of our strategic investments, we therefore work with everything from climate issues and digitalisation to reducing vulnerability.

Promoting collaboration and favourable conditions

Our position between sectors, along with our myriad research-based perspectives and resources, allows us to take a holistic approach to entire areas and work with partners from various angles. For example, to ensure that there are updated regulations, collaboration areas, and structures that promote the solutions required. This type of Governance Innovation can be difficult for individual organisations to implement.

RISE is equipped for the future and can take greater overall responsibility in areas where society must collectively transition. We are well acquainted with Swedish industry, we are accustomed to change processes, and we often have the deepest technical knowledge. Our mission unites our different roles, assignments, and perspectives in a larger task: to work with our customers and partners to develop competitive solutions and favourable conditions that truly advance sustainable development.

Today's focus for a sustainable future

In order to help industry and the public sector develop new solutions for a sustainable future, RISE continuously strives to develop new offerings and expertise. Our strategic investments are based on the current needs of the world around us, as well as those that are just around the corner.

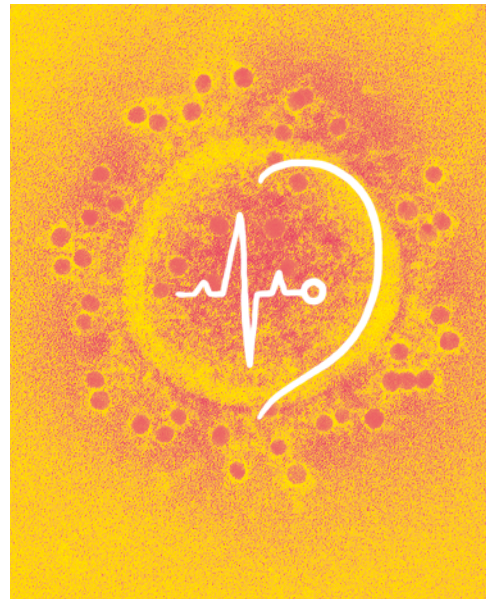


Digitalisation

The digital transformation in society demands new technical solutions, but updated regulations and structural support are also needed. RISE approaches digitalisation from several perspectives, which is why we work in numerous areas, including the ethical and secure use of digital services.

Health and welfare

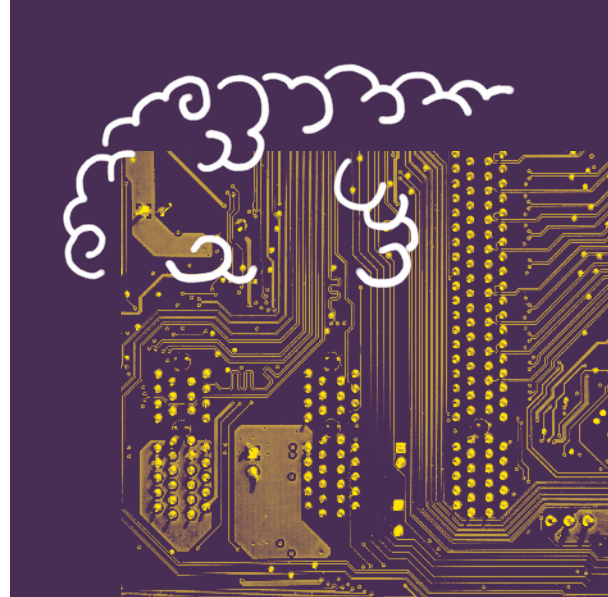
As public health challenges arise and evolve, technological developments are needed to contribute new approaches. That's why RISE has made health and well-being the focus of one of their important strategic initiatives. Among other areas, we look at preventive measures and solutions that bridge health disparities.





A strong, democratic society

How do we create a more robust future? High-profile cyber attacks, pandemics and natural disasters are already testing our resilience. That is why we invest in developing the knowledge and solutions to create and maintain a safe society.



Talent management and working life

How should we handle technological advances and the new demands brought about by long-term changes to the labour market? These are just a few of the challenges we address as part of RISE's strategic investment in skills supply and working life.



Climate and environment

To address the complex issues around climate change and the environment, new knowledge, technology and skills are required, spanning multiple disciplines and professions. That's why RISE works with everything from biodiversity to carbon capture and climate adaptation.

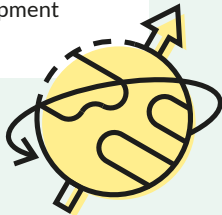
Competitiveness and transition with a scientific basis

Every year, 30,000 companies, businesses, and organisations use RISE's services for sustainable transition, applied research, lifelong learning, testing, certification, and calibration. With us as a partner, both small companies and large organisations can more effectively meet new demands and expectations from customers, citizens, and authorities.

RISE has both services and technologically sophisticated facilities for everyone who works with today's and tomorrow's sustainable solutions. By combining unique testbeds and applied research with industry and area knowledge, we can offer broad support with combined expertise, and can complement your work to the extent needed in order to progress. No matter the field or sector in which you operate.

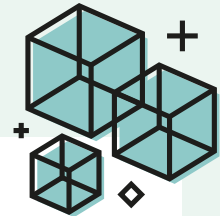
Transition management

- Strategic planning
- External analysis
- Scenario planning
- Policy development



Applied research and development

- Research partnerships
- Research programme management and coordination
- Tests and demonstrations
- Industrial processes and upscaling
- Expert problem solving and advice
- Innovation management



An offer with combined strength

The great challenges of our time are driving global, industrial, and societal transition. The complexity necessitates new solutions that can only be developed through research, innovation, and collaboration.

When RISE was formed in 2007, it was the start of Sweden's mobilisation towards interdisciplinary innovation and transition. Around 30 research institutes and 100 test facilities merged to create an independent operator with broad expertise.

Since its inception, RISE has grown in line with the needs of trade and industry and the public sector. We continuously re-evaluate our investments and develop new offerings that employ a scientific basis to help our customers to transition and to strengthen their competitiveness.

"With a few thousand in-house researchers, strategic consultants and project managers in the most important fields of social development, we are good at taking a step back, seeing the big picture, and understanding what factors are relevant and what needs to be done."

Eilert Johansson,
Head of Business Development at RISE



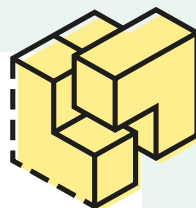
Testing, certification and calibration

- Testing
- Inspections
- Certification
- Calibration

Entrust RISE to:

- shorten lead times from idea to implementation
- reduce risk and increase value
- always focus on sustainability and environmentally friendly solutions
- serve as an independent partner delivering solutions with a scientific basis

Lifelong learning



- Competence development
- Knowledge strengthening
- Education

Insights and actions that keep your business relevant

The ability to cope with technological, social, demographic and political changes can be the difference between an existential crisis and increased competitiveness.

RISE has broad, unique insight into a variety of research and societal areas. We recognise things early on that others may not see. This enables us to provide well-founded intelligence studies, strategic roadmaps, future scenarios, and policy development that create favourable conditions for success in the coming years.

From insight to action

Our offer concerning transition management helps businesses drive development forward.

“We have early insight into what is often unknown to the organisations themselves, such as the latest developments in everything from artificial intelligence, cybersecurity, and electrification to governance, innovation management, circular transition and skills transition,” says Andreas Johansson.

“Through RISE, you gain new perspectives, valuable input and the ability to move forward with more informed decisions. We bring in with many different perspectives, and can propose projects, new technologies or new partners to carry your enterprise forward.”

Andreas Johansson, Head of Research and Business Development in the Built Environment area at RISE



"A testing and demonstration facility is a place where you can come to test and verify future solutions."

Monica Ringvik, CTO of RISE

APPLIED RESEARCH AND DEVELOPMENT

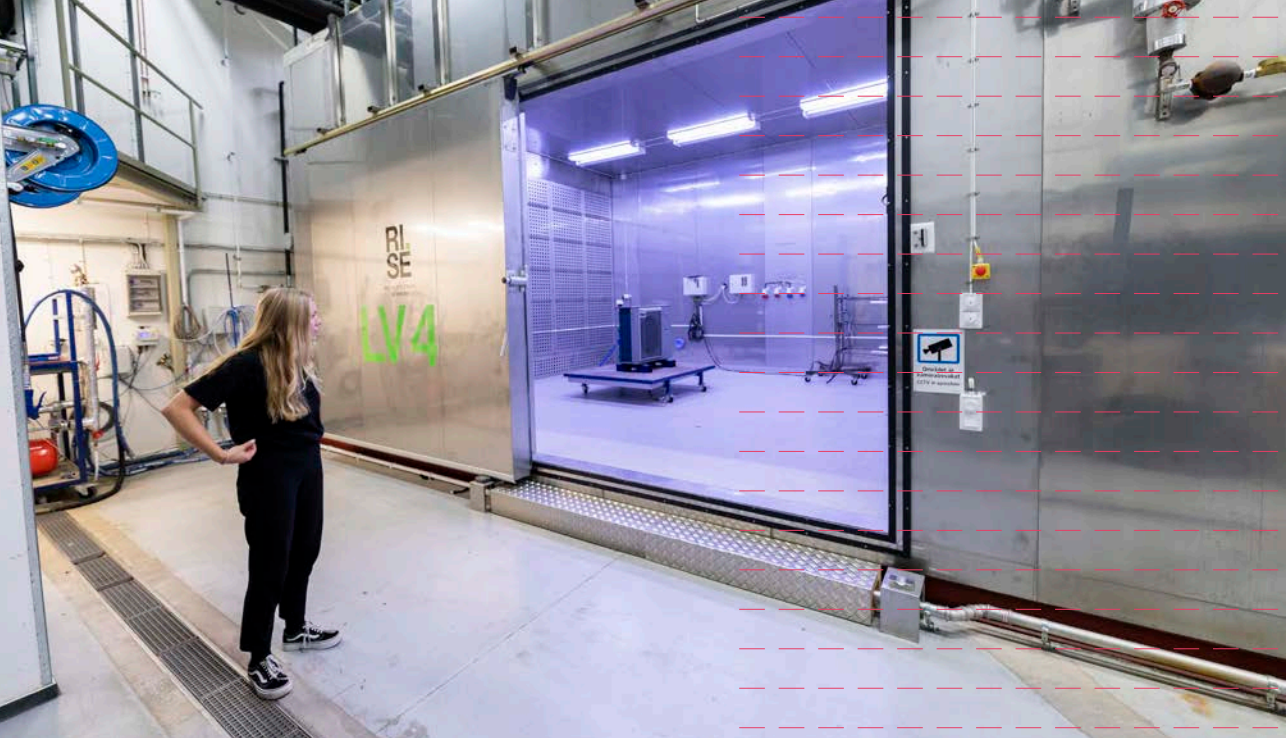
Develop and test tomorrow's solutions

Competitiveness and transition are achieved with knowledge developed through research. A combination of broad expertise and unique testing environments are now needed within everything from cybersecurity to autonomous vehicles.

Applied research and development are RISE's core offers. With a broad range of expertise, we have brought together expertise and industry experience in a single organisation. In addition, we have more than 130 testbeds and research facilities, open to customers and partners from all sectors and most industries.

Test environments as assets

In our test environments, we can connect sophisticated laboratory instruments and technology with relevant skills and expertise. We have testbeds for cybersecurity, additive manufacturing, biorefinery, electromobility, and much more. As of 2022, SSPA is now also part of RISE's marine offering, and together with Chalmers we have developed AstaZero – a full-scale test environment for future road safety and autonomous vehicles that attracts many international customers.



TESTING, CERTIFICATION AND CALIBRATION

With critical measurements and qualifications

Do you meet the requirements that you, your customers, and the authorities place on your products, services, instruments, and processes?

RISE is a reliable partner for those who want or need to confirm that their solution functions as intended. It may involve certification that opens the path to the market, the final fine-tuning in product development, critical inspections that allow the business to operate, or an invaluable quality review that safeguards both delivery and reputation.

Broad expertise in one place

No other operator on the market has a wider range of tests, inspections, certifications, and calibrations. In some cases, RISE is a world leader, such as in the calibration of impulse voltage and high-voltage, direct current (HVDC). We also have unrivalled proficiency in fire protection testing, we are the sole institute able to issue the P-label for wet areas, and we have developed a unique test environment for cybersecurity.

True impartiality

When review bodies carry out inspections, or when products must be developed or produced on a large scale, quality assurance and peace of mind can be ensured by having a state-owned, well-known, and highly credible independent partner.

Transition to a learning organisation

To overcome the societal challenges we face, we need to further develop our skills, learn new things and relearn old ones. And this requires a new way of thinking about skills and more ways to learn.

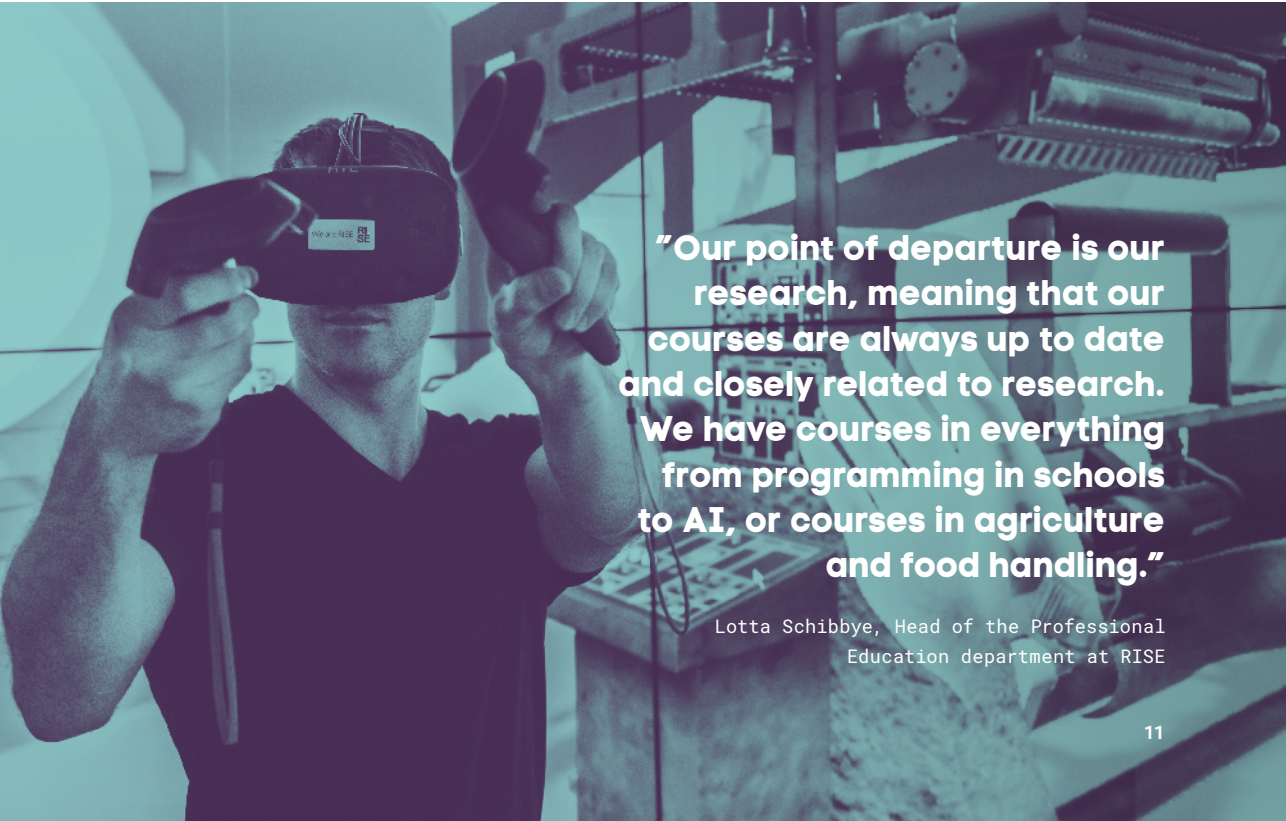
RISE has the requisite expertise to support customers and partners in this transition. We have extensive domain expertise in fields such as AI, cybersecurity, batteries, hydrogen, and many more. In combination with our research and expertise in learning, this makes us a unique partner in learning and training.

Relevant and topical

RISE works at all levels to strengthen lifelong learning. We formulate assignment-based learning to strengthen the business community and industry, and we provide open courses in specific fields – everything from robots and AI to underwater concrete casting.

With many perspectives

We are a strategic partner for lifelong learning, the provision of skills, and digital transformation. We can assist with learning processes, methodology, and leadership. Training and lifelong learning are important focus areas throughout RISE, where we combine applied research with expertise and a powerful drive.



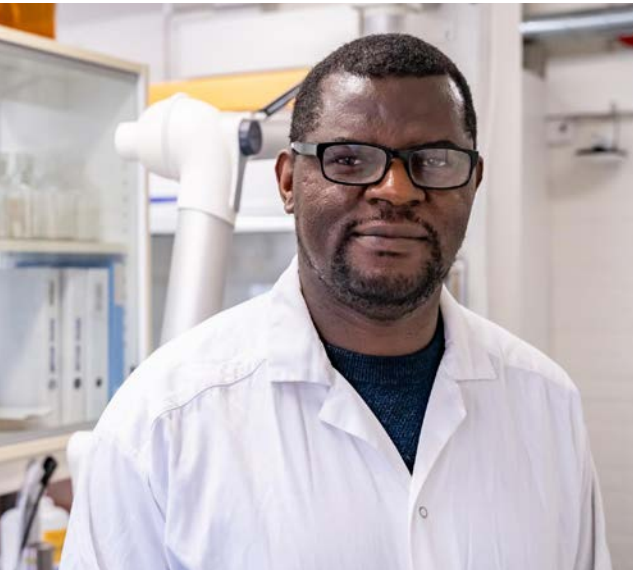
“Our point of departure is our research, meaning that our courses are always up to date and closely related to research. We have courses in everything from programming in schools to AI, or courses in agriculture and food handling.”

Lotta Schibbye, Head of the Professional Education department at RISE

Together with different perspectives

At RISE, we work with the solutions and conditions that make a difference here and now, and with the knowledge areas and technologies that may be crucial tomorrow.

Here, different perspectives and experts converge in challenging assignments. The mix of roles and skills gives us and others better conditions in a complex world. It also creates a workplace with plenty of room for variation and development.



Placid Atongka Tchoffer

Researcher. Works with carbonation-based carbon capture and storage.

"By developing new technologies for CCS, we can help solve a global problem. Climate change affects everyone, no matter where you live on Earth, so this is really a driving force for me."

Sanna Klefbom

Master's student

"Among other things, I got to work with external stakeholders, and it was exciting to learn how to interact and work with design based on everyone's different needs."





Camilla Evensson

Head of the Future Care focus area.

"What do we want our healthcare and social care services to be like in the future? You are needed as we mobilise society's operators to achieve the systemic transition that needs to take place now."

Olof Mogren

Researcher. Works with AI.

"Our focus is on machine learning and deep learning, which means we work with the most exciting and coolest technologies around."



Ingrid Kihlander

Researcher. Works with innovation management.

"Building up knowledge about how innovation and renewal work can be managed and organised – and how the knowledge can be used concretely – is both fun and challenging. And an important part of ushering in change."

Kim Elman

Head of the Centre for Cybersecurity.

"The best thing we can do is to continue to raise the basic level of our cybersecurity and work proactively to understand the current situation and its implications for our own organisation. Cybersecurity is an interdisciplinary field, and to get where we need to be requires technical, educational, and economic approaches."



RISE in figures

9

ranking in the
Karriärbarmetern
survey among young
professional graduate
engineers

130+

testbeds and demonstration
environments

Approx.

3,000

employees

94%

of our projects were
declared for sustainability
in December 2021

2025

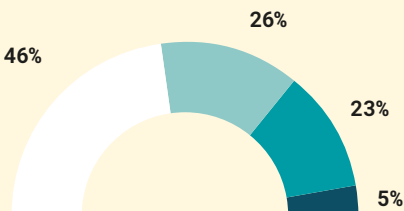
The year when RISE becomes
climate neutral

39%

women

3,618

net sales, SEK million



Distribution of net sales

Business sector	1 651 MSEK
Public funds	954 MSEK
State funds	827 MSEK
EU funds	186 MSEK

All figures refer to 2021

Follow us and immerse yourself in our world

Our social media channels offer insight into what we do and our perspectives on current issues. At ri.se we share knowledge and stories about what we do, and our podcasts Materialperspektivet, Livslångt, and Nytänkarpodden can be found on Spotify.



CONTACT US

Would you like to know more about RISE?

**At ri.se you can easily search for the area,
service, or person you wish to contact.**

Our head office is located at Lindholmskajen in Gothenburg, but our operations, testbeds, and employees are spread across the country.



RISE is an independent, state-owned research institute. As an innovation partner for every part of society, we help develop technologies, products, services and processes that contribute to a sustainable world and a competitive business community. We do this in collaboration with and on behalf of companies, academia and the public sector. We also have a special focus on supporting small and medium-sized enterprises in their innovation processes.